



MAP2(N-term) mouse mAb

Catalog No	YP-Ab-02966
Isotype	IgG
Reactivity	Human;Mouse
Applications	WB;IP;ICC
Gene Name	map2
Protein Name	
Immunogen	Purified recombinant human MAP2 (N-terminus) protein fragments expressed in E.coli
Specificity	This antibody detects endogenous levels of MAP2 (N-terminus) and does not cross-react with related proteins.
Formulation	Liquid in PBS containing 50% glycerol, 0.5% BSA and 0.02% sodium azide.
Source	Monoclonal, Mouse
Purification	The antibody was affinity-purified from mouse ascites by affinity-chromatography using epitope-specific immunogen.
Dilution	wb dilution 1:1000 icc dilution 1:150
Concentration	1 mg/ml
Purity	≥90%
Storage Stability	-20°C/1 year
Synonyms	DKFZp686l2148;Dendrite specific MAP;DKFZp686l2148;MAP 2;MAP dendrite specific;MAP-2; MAP2;MAP2A;MAP2B;MAP2C;Microtubule associated protein 2;Microtubule-associated protein 2;Mtap 2;MTAP2_HUMAN.
Observed Band	300kD
Cell Pathway	Cytoplasm, cytoskeleton . Cell projection, dendrite .
Tissue Specificity	Brain,Brain cortex,Epithelium,Pancreas,Testis,
Function	alternative products:Additional isoforms seem to exist,function:The exact function of MAP2 is unknown but MAPs may stabilize the microtubules against depolymerization. They also seem to have a stiffening effect on microtubules.,PTM:MAP2A/c is phosphorylated. Phosphorylated upon DNA damage, probably by ATM or ATR.,similarity:Contains 3 Tau/MAP repeats.,similarity:Contains 4 Tau/MAP repeats.,
Background	This gene encodes a protein that belongs to the microtubule-associated protein family. The proteins of this family are thought to be involved in microtubule assembly, which is an essential step in neurogenesis. The products of similar genes in rat and mouse are neuron-specific cytoskeletal proteins that are enriched in dendrites, implicating a role in determining and stabilizing dendritic shape during neuron development. A number of alternatively spliced variants encoding distinct



isoforms have been described. [provided by RefSeq, Jan 2010],

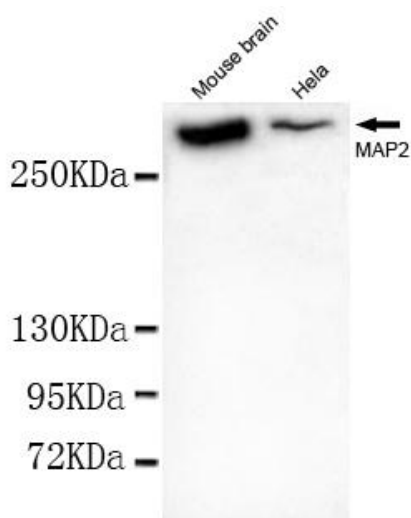
matters needing attention

Avoid repeated freezing and thawing!

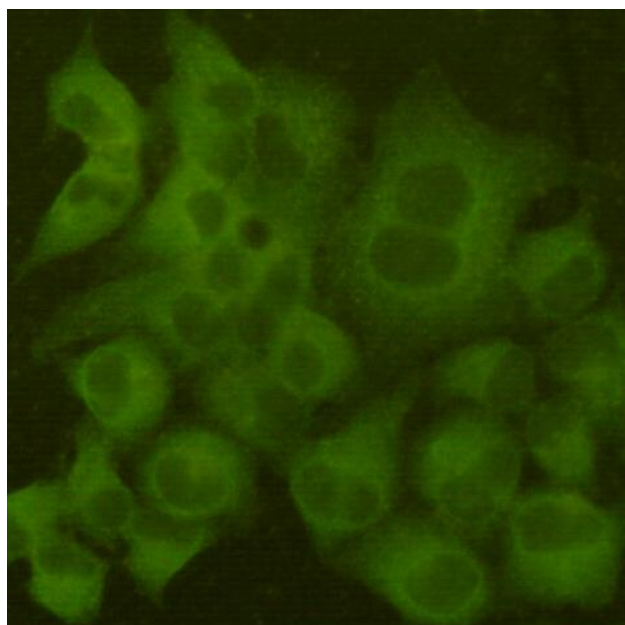
Usage suggestions

This product can be used in immunological reaction related experiments. For more information, please consult technical personnel.

Products Images



Western blot detection of MAP2(N-terminus) in Mouse Brain tissue and HeLa cell lysates using MAP2(N-terminus) mouse mAb (1:1000 diluted). Predicted band size: 202KDa. Observed band size: 300KDa.



Immunocytochemistry staining of HeLa cells fixed with 4% Paraformaldehyde and using anti-MAP2(N-term) mouse mAb (dilution 1:100).



Ctrl IgG IP: - + -
MAP2 IP: - - +

Immunoprecipitation analysis of HeLa cell lysates using
MAP2 (N-terminus) mouse mAb.

